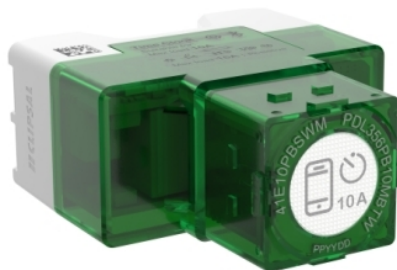


# 41E10PBSWM-VW

Connected Switch, Iconic, BLE default mode,  
ControlLink, 10 AX, 240 V, Vivid white



## Main

Range compatibility	Clipsal Iconic cover plate Pro Series cover plate
Product brand	Clipsal
Range	Iconic
Product or component type	Electronic switch

## Complementary

Device presentation	Mechanism
Load type	Dimmable LED lighting driver: 10 A LED lighting driver (non-dimmable): 10 A Electronic transformer: 10 A Medium voltage halogen lamp: 10 A Linear fluorescent ballast: 10 A Inductive: 6 A (0.6) Resistive: 15 A Motor: 10 A
[Ue] rated operational voltage	220...240 V AC 50 Hz
Protection type	Over temperature protection Thermal protection
Colour tint	Vivid white (VW)
Local signalling	LED
Control type	Push-button By mobile application Multi-way control via ControlLink
Number of ways	5 ways
Software name	Wiser by SE App
Maximum number of connected devices	3 (switch) 2 (ControlLink module)
Cable length	50 m for ControlLink module
Technology type	Bluetooth low energy default Zigbee
Memory description	Backup memory - date and time for 6 h Backup memory - program for indefinite period
Wiring configuration	3-wire
Material	Plastic
Mounting support	Grid
Device mounting	Flush
Fixing mode	Clip-in
Fixing center	84 mm
Type of installation	Indoor installation
Embedding depth	70 mm
Depth	56 mm
Width	48 mm






The information provided in this documentation contains general descriptions and/or technical characteristics of the performance of the products contained herein. This documentation is not intended as a substitute for and is not to be used for determining suitability or reliability of these products for specific user applications. It is the duty of any such user or integrator to perform the appropriate and complete risk analysis, evaluation and testing of the products with respect to the relevant specific application or use thereof. Neither Schneider Electric Industries SAS nor any of its affiliates or subsidiaries shall be responsible or liable for misuse of the information contained herein.

Height	22 mm
Standards	AS/NZS 60669.2.1 safety AS/NZS 60669.2.1 EMC AS/NZS 4268 radio

## Environment

IP degree of protection	IP20
Relative humidity	5...90 % non-condensing

## Offer Sustainability

REACH Regulation	 <a href="#">REACH Declaration</a>
EU RoHS Directive	Compliant  <a href="#">EU RoHS Declaration</a>
Mercury free	Yes
RoHS exemption information	 <a href="#">Yes</a>
China RoHS Regulation	 <a href="#">China RoHS Declaration</a>
Environmental Disclosure	 <a href="#">Product Environmental Profile</a>