

### HEX SCREWS



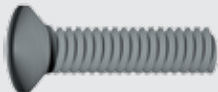
Thread Size	Length (mm)	Zinc Plated	Hot Dip Galvanised	Stainless Steel
M6	20	HS620Z	HS620H	HS620S
	25	HS625Z	-	HS625S
	30	HS630Z	-	HS630S
	40	HS640Z	-	HS640S
M8	20	HS820Z	HS820H	HS820S
	25	HS825Z	HS825H	HS825S
	30	HS830Z	HS830H	HS830S
	40	HS840Z	HS840H	HS840S
M10	20	HS1020Z	HS1020H	HS1020S
	25	HS1025Z	HS1025H	HS1025S
	30	HS1030Z	HS1030H	HS1030S
	40	HS1040Z	HS1040H	HS1040S
M12	25	HS1225Z	HS1225H	HS1225S
	30	HS1230Z	HS1230H	HS1230S
	40	HS1240Z	HS1240H	HS1240S
	50	HS1250Z	HS1250H	HS1250S

### PAN HEAD SCREWS



Thread Size	Length (mm)	Zinc Plated	Hot Dip Galvanised	Stainless Steel
M6	16	PS616Z	-	-
	20	PS620Z	PS620H	-
	25	PS625Z	-	-
M8	25	PS825Z	-	-

### COUNTERSUNK SET SCREWS



Thread Size	Length (mm)	Zinc Plated	Hot Dip Galvanised	Stainless Steel
M6	16	CS616Z	-	-
	20	CS620Z	-	-
	25	CS625Z	-	-
M8	20	CS820Z	-	-
	25	CS825Z	-	-

### HEX NUTS



Thread Size	Zinc Plated	Hot Dip Galvanised	Stainless Steel
M6	HN6Z	HN6H	HN6S
M8	HN8Z	HN8H	HN8S
M10	HN10Z	HN10H	HN10S
M12	HN12Z	HN12H	HN12S
M16	HN16Z	-	-

### FLAT WASHERS



Thread Size	Zinc Plated	Hot Dip Galvanised	Stainless Steel
M6	FW6Z	FW6H	FW6S
M8	FW8Z	FW8H	FW8S
M10	FW10Z	FW10H	FW10S
M12	FW12Z	FW12H	FW12S
M16	FW16Z	-	-

### SPRING WASHERS



Thread Size	Zinc Plated	Hot Dip Galvanised	Stainless Steel
M6	SW6Z	SW6H	SW6S
M8	SW8Z	SW8H	SW8S
M10	SW10Z	SW10H	SW10S
M12	SW12Z	SW12H	SW12S
M16	SW16Z	-	-

### WEDGE NUTS



Thread Size	Zinc Plated
M6	EWGNM6
M8	EWGNM8
M10	ENGNM10

### MUD GUARD WASHERS



Thread Size	Zinc Plated	Hot Dip Galvanised	Stainless Steel
M6	MW6Z	MW6H	-
M8	MW8Z	-	-
M10	MW10Z	MW10H	-
M12	MW12Z	-	-

### THREADED ROD

Ask us about Rod Cutters

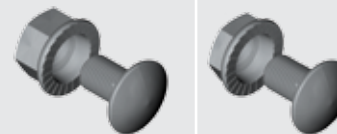


Supplied in 3m lengths

Thread Size	Zinc Plated	Hot Dip Galvanised	Stainless Steel
M6	TR6Z	-	-
M8	TR8Z	TR8H	-
M10	TR10Z	TR10H	TR10S
M12	TR12Z	TR12H	TR12S
M16	TR16Z	-	-

### SPLICE BOLTS & NUTS

Both items are ordered separately. EzyStrut Splice Bolts have a smooth head to eliminate the risk of sheathing the cable during installation. Purpose made Counterbore Nuts ensure that full tension is achieved during installation.



### SBH & CNH

Hot Dip Galvanised.

### SB & SN

Available as Hot Dip Galvanised or Stainless Steel.

Specify ETFKH when both parts are required. ETFKH supplied in packs of 40.

### CHANNEL NUT, LONG SPRING



Suits all 41mm high channel

Thread Size	Zinc Plated	Hot Dip Galvanised	Stainless Steel
M6	E1006Z	E1006H	E1006S
M8	E1007Z	E1007H	E1007S
M10	E1008Z	E1008H	E1008S
M12	E1010Z	E1010H	E1010S

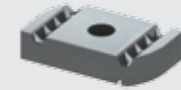
### CHANNEL NUT, SHORT SPRING



Suits all 21mm high channel

Thread Size	Zinc Plated	Hot Dip Galvanised	Stainless Steel
M6	E4006Z	E4006H	-
M8	E4007Z	E4007H	-
M10	E4008Z	E4008H	-
M12	E4010Z	E4010H	-

### CHANNEL NUT, NO SPRING



Suits all channel

Thread Size	Zinc Plated	Hot Dip Galvanised	Stainless Steel
M6	E3006Z	E3006H	-
M8	E3007Z	E3007H	-
M10	E3008Z	E3008H	-
M12	E3010Z	E3010H	-

### E3016 CHANNEL NUT, NO SPRING

Suits all channel

Thread Size	Zinc Plated	Hot Dip Galvanised	Stainless Steel
M6	E3016Z	E3016H	E3016S