

Category 6A, 6 and 5e Copper Selection Guide

UTP Jack Modules

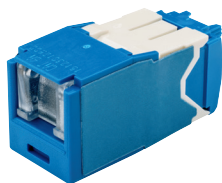
- High performance termination
- Wire cap with separate quadrant for each conductor pair
- Highest density 48 ports in 1RU
- Provide minimal cable untwist
- 100% tested and individually serialized
- Terminates 22-26 AWG solid and stranded conductors

Standard



Part Number	Performance	Description
CJ6X88TG**	Category 6A	TX6A™ 10Gig UTP Jack Module
CJ688TG**	Category 6	TX6™ PLUS UTP Jack Module
CJ5E88TG**	Category 5e	TX5e™ UTP Jack Module

Shuttered



- Spring shuttered doors automatically open and close with plug insertion/removal
- Shuttered jacks are ideal for dust environments where jacks are not always mated

Part Number	Performance	Description
CJH6X88TG**	Category 6A	TX6A™ 10Gig Spring Shuttered Jack Module
CJH688TG**	Category 6	TX6™ PLUS Spring Shuttered Jack Module
CJH5E88TG**	Category 5e	TX5e™ Spring Shuttered Jack Module

28/30 AWG



- Terminates 28 AWG solid/stranded to 30 AWG solid conductors
- Required for terminating to wires of Panduit 28 AWG patch cords

Part Number	Performance	Description
CJ6X88TG**	Category 6A	TX6A™ 10Gig 28/30 AWG Jack Module
CJ688TG**	Category 6	TX6™ PLUS 28/30 AWG Jack Module
CJ5E88TG**	Category 5e	TX5e™ 28/30 AWG Jack Module

(Available colors for all jack module designs)



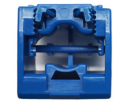
** = Color. Colors shown may differ slightly from actual jack colors.

IW=Off White, EI=Electric Ivory, IG=International Gray, AW=Arctic White, BL=Black, BU=Blue, GR=Green, RD=Red, OR=Orange, VL=Violet, YL=Yellow, WH=White.

Category 6A, 6 and 5e Copper Selection Guide

Wire Cap Color Chart

- Panduit wire cap color indicates performance level



22-28 AWG



26-30 AWG

Wire Cap	Category 6A	Category 6	Category 5e
22-28 AWG	Blue	White	Red
26-30 AWG	Aqua	Green	Yellow

BU=Blue, WH=White, RD=Red, AQ=Aqua, GR=Green, and YL=Yellow

Patch Cords

TX6A™, TX6™ PLUS and TX5e™ Patch Cords

- Supports up to 100 meters of channel length
- 24 AWG de-rating factor: 1.2
- CM flame rating with LSZH option for Category 6 (meter lengths only)



Part Number	Performance	Description
UTP6A*M^	Category 6A	Category 6A TX6A™ 10Gig 24 AWG UTP Patch Cord with MaTriX Technology
UTPSP*M^	Category 6	Category 6 TX6™ PLUS 24 AWG UTP Patch Cord
UTPCH*M^Y	Category 5e	Category 5e TX5e™ 24 AWG UTP Patch Cord

* Length: 0.5 – 10m (every 0.5m)
11 – 20m (every 1m)
25 to 60m (every 5m)

Category 6A, Category 6 and Category 5e 28 AWG Patch Cords

- Supports up to 96 meters of channel length (when using 6 meters of patch)
- Dual CM/LSZH flame rating
- 28 AWG de-rating factor: 1.9



Part Number	Performance	Description
UTP28X*M^	Category 6A	Category 6A 28 AWG UTP patch cord
UTP28SP*M^	Category 6	Category 6 28 AWG UTP patch cord
UTP28CH*M^	Category 5e	Category 5e 28 AWG UTP patch cord

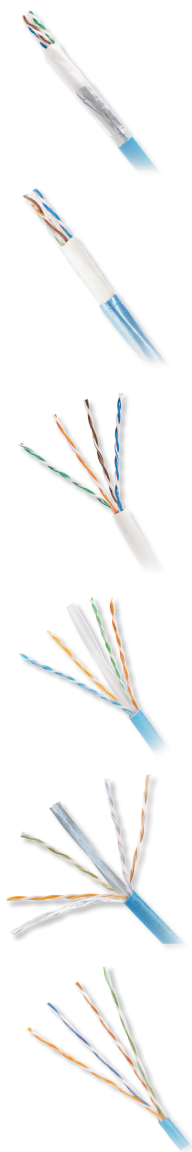
* Length: 0.5 – 10m (every 0.5m)
11 – 20m (every 1m)
25 to 60m (every 5m)

Available cord colors



Off White (default; no designation needed), BL=Black, BU=Blue, GR=Green, RD=Red, OR=Orange, VL=Violet, YL=Yellow, GY=Gray.
Note: Colors shown may vary slightly from actual cable colors.

Copper Cable



Part Number	Description	Std. Pkg. Qty. (RL)	Std. Ctn. Qty.
PUC6AM04**-CEG	Category 6A, UTP CM, 4-pair, conductors are 23 AWG, twisted pairs, separated by an integrated pair divider, surrounded by Advanced MaTriX tape protected by a PVC jacket, Blue, Euro pallet.	1	18
PUC6ASD04**-EG	Category 6A (SD), UTP, CM, 4-pair, conductors are 26 AWG, twisted pairs, separated by an integrated pair divider, surrounded by patented MaTriX tape protected by a flame-retardant PVC jacket.	1	18
PUD6C2804**-CE	Category 6, UTP, 4-pair, conductors are 28 AWG, twisted pairs, protected by a flame retardant CM/LSZH/LSZH-FR jacket.	1	30
PUC6004**-FE	Enhanced Category 6, UTP, CM, 4-pair, conductors are 23 AWG with HDPE insulation, twisted pairs, separated by an integrated pair divider and protected by a flame-retardant PVC jacket.	1	24
PUC6C04**-C	Category 6, UTP, 4-pair, conductors are 24 AWG with PE insulation, twisted pairs, separated by cross divider and protected by a PVC jacket.	1	20
PUC5504**-Y	Category 5e, UTP, 4-pair, conductors are 24 AWG with HDPE insulation, twisted pairs, separated by cross divider and protected by a PVC jacket.	1	36

** Copper cable is shown in Blue (BU) or WH (White). Visit www.panduit.com for availability of other colors.

Category 6A, 6 and 5e Copper Selection Guide

NEW! Mini-Com™ Surface Mount Boxes with Quick Release Cover

- Empty boxes accept all Mini-Com™ Modules
- Includes a quick removal cover; does not require a tool
- Stronger, hidden magnet improves retention and prevents damage to surface
- Wide breakouts compatible with larger cables
- Shuttered feature is added when installing new shuttered jacks (CJH^88TG**)
- 3-port surface mount box includes a 4-port surface mount box plus a blank module



Ports	Part Numbers			
	Empty	Category 5e*	Category 6*	Category 6A*
1-port	JOQ10000	JOQ1H500	JOQ1H600	JOQ1H6A00
2-port	JOQ20000	JOQ2H500	JOQ2H600	JOQ2H6A00
3-port (with extra blank module)	JOQ3B000	JOQ3BH500	JOQ3BH600	JOQ3BH6A00
4-port	JOQ40000	JOQ4H500	JOQ4H600	JOQ4H6A00
6-port	JOQ60000	JOQ6H500	JOQ6H600	JOQ6H6A00

^Add 6A, 6 or 5e

*Surface mount boxes are listed in IW (Off White). Other color available is BL (Black). Add BL to the end of the part number. Example: JOQ10000BL. See pg.1 for additional jack module color options.

WORLDWIDE SUBSIDIARIES AND SALES OFFICES

PANDUIT CANADA
Markham, Ontario
cs-cdn@panduit.com
Phone: 800.777.3300

PANDUIT EUROPE LTD.
London, UK
cs-emea@panduit.com
Phone: 44.20.8601.7200

PANDUIT SINGAPORE PTE. LTD.
Republic of Singapore
cs-ap@panduit.com
Phone: 65.6305.7575

PANDUIT JAPAN
Tokyo, Japan
cs-japan@panduit.com
Phone: 81.3.6863.6000

PANDUIT LATIN AMERICA
Guadalajara, Mexico
cs-la@panduit.com
Phone: 52.33.3777.6000

PANDUIT AUSTRALIA PTY. LTD.
Victoria, Australia
cs-aus@panduit.com
Phone: 61.3.9794.9020

For a copy of Panduit product warranties, log on to www.panduit.com/warranty

For more information

Visit us at www.panduit.com

Contact Customer Service by email: cs@panduit.com
or by phone: 800-777-3300

PANDUIT®

©2016 Panduit Corp.
ALL RIGHTS RESERVED.
COSG12--WW-ENG
9/2016