



SmartBright LED Downlight DN029B

DN029B G2 LED8/CCT PSR-E D90 CAU 10-PK

SmartBright LED Downlight DN029B, 7.5 W, 800 lumen, 3000 K, 4000 K, 6500 K, Frosted

SmartBright Downlight family is the perfect energy efficient LED replacement for conventional downlights. It offers three solutions around energy efficiency, selectable colour temperature and being a three step dimming downlight: Essential SmartBright Downlight G3 DN029B-1– trailing and leading edge dimmable downlight is the ideal functional replacement for conventional downlights. This affordable and easy to install fitting delivers high energy savings without compromising on light quality. This hassle-free Essential SmartBright DN029B-2 downlight provides you with the flexibility to select the perfect colour temperature (Warm White/Cool White/Day Light) for the application. Integrated with trailing/leading edge dimming capability, this affordable and easy to install fitting delivers high energy savings without compromising on light quality. Essential SmartBright DN029B-3 step dimming downlight is the perfect hassle-free replacement for conventional dimmable downlights. Adjust the light level straight from the switch and save cost with installation as a dimmer unit is not required.

Product data

General Information			
Light source replaceable	No	Luminous Efficacy (rated) (Nom)	106.00 lm/W
Lighting Technology	LED	Color rendering index (CRI)	80
		Light source color	3000/4000/6500
		Luminaire light beam spread	100°
Light Technical		Operating and Electrical	
Luminous Flux	800 lumen	Input Voltage	220 to 240 V
Correlated Color Temperature (Nom)	3000 4000 6500 K		

SmartBright LED Downlight DN029B

Line Frequency	50 or 60 Hz
Input Frequency	50 or 60 Hz
Power Consumption	7.5 W
Power Factor (Fraction)	0.8
Connection	Plug-in connector 2-pole

Temperature

Ambient temperature range	-20 to +40 °C
---------------------------	---------------

Controls and Dimming

Dimmable	Yes
----------	-----

Mechanical and Housing

Housing Material	Metal–Plastic
Reflector material	Polycarbonate
Optic material	Polycarbonate
Fixation material	Stainless steel
Housing Color	White
Optical cover finish	Frosted
Overall length	114 mm
Overall width	114 mm
Overall height	56 mm
Overall diameter	114 mm
Dimensions (Height x Width x Depth)	56 x 114 x 114 mm

Approval and Application

Ingress protection code	IP40/IP54 front
-------------------------	-----------------

Mech. impact protection code	IK03 [0.3 J]
Protection class IEC	Safety class II

Initial Performance (IEC Compliant)

Initial chromaticity	(3000K@, 0.4400, 0.4030; 4000K@0.37600.3656; 6500K@0.31300.3370) 6
Power consumption tolerance	+/-10%

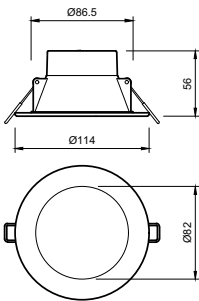
Over Time Performance (IEC Compliant)

Driver failure rate at 5000 h	1.2 %
Median useful life L70B50	30,000 hour(s)

Product Data

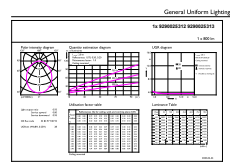
Full product code	871951425179300
Order product name	DN029B G2 LED8/CCT PSR-E D90 CAU 10-PK
Order code	929002531249
Numerator - Quantity Per Pack	1
Numerator - Packs per outer box	4
Material Nr. (12NC)	929002531249
Full product name	DN029B G2 LED8/CCT PSR-E D90 CAU 10-PK
EAN/UPC - Case	8719514251809
EAN/UPC - Product/Case	8719514251793

Dimensional drawing



SmartBright LED Downlight DN029B

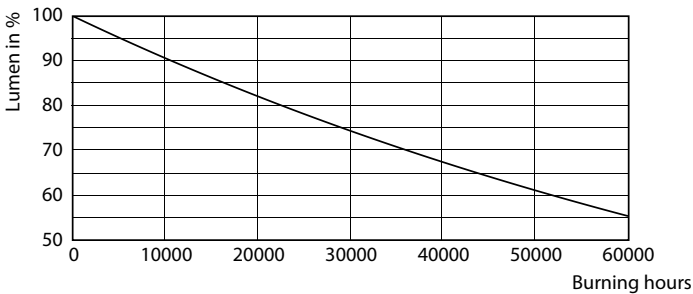
Photometric data



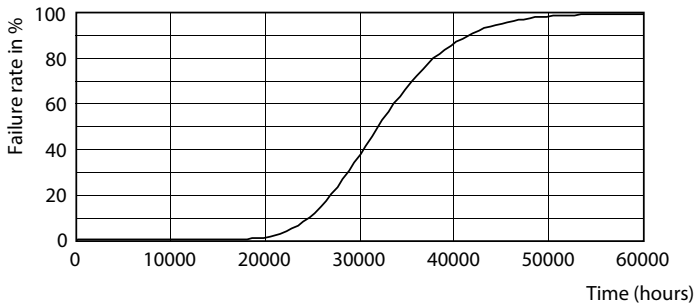
General uniform lighting - DN029B G2 LED8/CCT PSR-E D90 CAU 10-PK

General uniform lighting - DN029B G2 LED8/CCT PSR-E D90 CAU 10-PK

Lifetime



Lumen Maintenance Diagram - DN029B G2 LED8/CCT PSR-E D90 CAU 10-PK



Life Expectancy Diagram - DN029B G2 LED8/CCT PSR-E D90 CAU 10-PK

