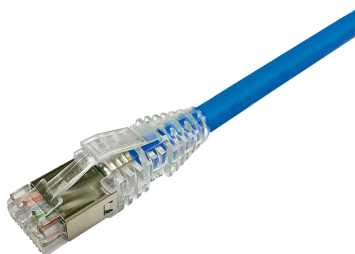


NPC6ASZDB-BL



NPC RJ45 Patch Cord, category 6A, S/FTP, LSZH, blue

- High-performance patch cords exceeding industry standards supporting NETCONNECT channel specifications
- Standardized transparent, slim-line boots provides consistent patch cord appearance and supports highest density applications
- Colored clips are available to fit the transparent boot, eliminating the need of multiple colors for matching every jacket color
- Colored pull latch tabs are available for easier plug release handling from the modular jack

Product Classification

Portfolio	NETCONNECT®
Product Series	NPC
Product Type	Twisted pair patch cord
Regional Availability	Asia Australia/New Zealand EMEA

Dimensions

Cord Length, maximum	100 m 999 cm
Cord Length, minimum	1 m 50 cm
Diameter Over Jacket	5.90 mm 0.23 in

Electrical Specifications

ANSI/TIA Category	6A
--------------------------	----

Environmental Specifications

Environmental Space	Low Smoke Zero Halogen (LSZH)
Operating Temperature	-20 °C to +60 °C (-4 °F to +140 °F)
Safety Standard	UL 1863

General Specifications

Cable Type	S/FTP (shielded)
Interface, connector A	RJ45 plug
Interface, connector B	RJ45 plug
Jacket Color	Blue
Interface Feature, connector A	Standard
Interface Feature, connector B	Standard
Package Quantity	1
Pairs, quantity	4

NPC6ASZDB-BL

Mechanical Specifications

Conductor Type	Stranded
Conductor Gauge, stranded	26 AWG
Plug Insertion Life, minimum	750 times
Wiring	T568B

Regulatory Compliance/Certifications

Agency
RoHS 2011/65/EU

Classification
Compliant

Included Products

6-2111989-3 | MP-6S-C-1 — Modular Plug Kit, category 6, shielded, 8-position, 5.7 – 7.0 mm max cable jack OD, 100/bag

2843032-3 | MP-Boot-S/SL-AB — Modular Plug Shielded Slim-Line Boot for Category 6A/6 and Category 5e EMT Plugs, 4.7 to 6.0 mm, transparent