



# Plusline Small

Plusline S 300W R7s 240V 1BC/10

Mains-voltage linear lamp giving white halogen light

## Product data

### • General Information

Cap base	R7S [ R7s]
Bulb shape	T3 [ T 12mm (T3)]
Burning Position	UNIVERSAL [ Any/Universal]
Nominal lifetime (nom.)	2000 h

### • Light Technical

Lamp Luminous Flux 25°C EL (Nom)	5114 lm
Lamp Luminous Efficiency EM (Nom)	17 lm/W
Colour Rendering Index,horiz (Nom)	100

### • Operating and Electrical

Power (Rated) (Nom)	300 W
Lamp current (nom.)	1.25 A
Starting time (nom.)	0.0 s
Voltage (Nom)	240 V

### • Controls and Dimming

Dimmable	yes
----------	-----

### • Mechanical and Housing

Bulb finish	Clear (CL)
-------------	------------

### • Approval and Application

Energy efficiency label (EEL)	E
-------------------------------	---

### • Luminaire Design Requirements

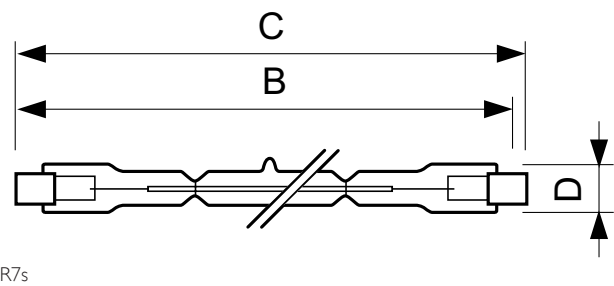
Bulb temperature (max.)	900 °C
Pinch temperature (max.)	350 °C

### • Product Data

Full product code	872790081797300
Order product name	Plusline S 300W R7s 240V 1BC/10
EAN/UPC – product	8727900817973
Order code	924735445597
Local Code	DESMALL300W240V
Numerator – quantity per pack	1
Numerator – packs per outer box	10
Material no. (12NC)	924735445597
Net weight (piece)	0.008 kg
ILCOS Code	HDG//RS-300-240-R7s-114,2

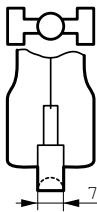
# PHILIPS

Dimensional drawing



DESmall 300W R7s 240V T3 CL

Product	D	B	B	B	C
Plusline S 300W R7s 240V 1BC/10	12 mm	115,8 mm	114,2 mm	112,6 mm	117,6 mm



© 2016 Philips Lighting Holding B.V.  
All rights reserved.

Specifications are subject to change without notice. Trademarks are the property of Koninklijke Philips N.V. (Royal Philips) or their respective owners.

[www.philips.com/lighting](http://www.philips.com/lighting)

2016, October 10  
data subject to change