

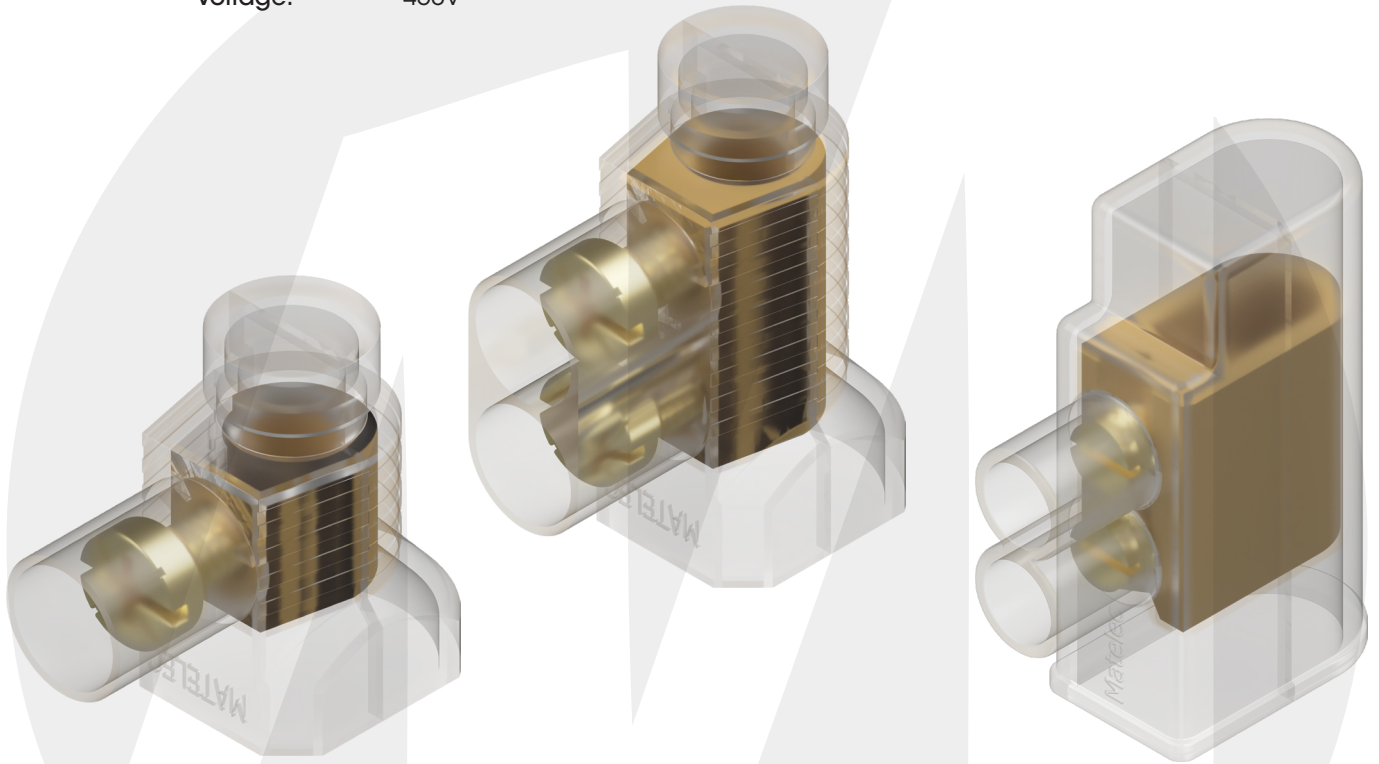
## FEATURES & BENEFITS

- Tapered cable entry
- Deep flat/slotted screw heads, enabling tight positive connection
- Soft, pliable material
- High quality jar

## SPECIFICATIONS

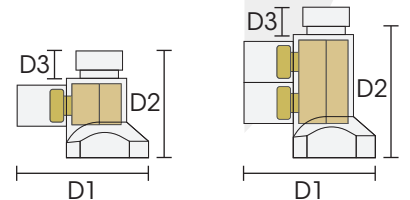
**Material:** Insulator - Flame retardant PVC  
Connector - Brass

**Voltage:** 450V



## DIMENSIONS

	2 x 6mm <sup>2</sup> Single	2 x 6mm <sup>2</sup> Double	3 x 6mm <sup>2</sup> Single	2 x 16mm <sup>2</sup> Double	2 x 35mm <sup>2</sup> Double
D1 (mm)	22	22	25.2	38	45
D2 (mm)	20.3	27.2	22.16	44.5	58.5
D3 (mm)	4.8	4.8	4.8	8	11.5



## CABLE CONNECTORS - INSULATED RANGE

Code	Description	Amp Rating	Packing	MOQ	Ctn
FCN-16224	2 x 6mm <sup>2</sup> Double Screw Connector	32 Amp	50/Jar	1 Jar	18
FCN-16226	2 x 6mm <sup>2</sup> Single Screw Connector	32 Amp	100/Jar	1 Jar	18
FCN-16229	2 x 6mm <sup>2</sup> Single Screw Connector	32 Amp	500/Jar	1 Jar	4
FCN-16230	2 x 6mm <sup>2</sup> Double Screw Connector	32 Amp	300/Jar	1 Jar	4
FCN-16235	2 x 16mm <sup>2</sup> Double Screw Connector	63 Amp	10/Box	1 Box	750
FCN-16240	2 x 35mm <sup>2</sup> Double Screw Connector	80 Amp	10/Box	1 Box	200
SC1-3x6/50	3 x 6mm <sup>2</sup> Single Screw Connector	40 Amp	50/Jar	1 Jar	18